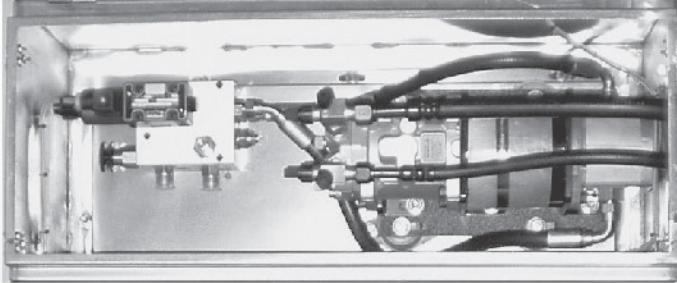


### Features

- Heavy-duty stainless steel construction
- Precise hydraulic control
- Direct drive compressor
- Compressor mounted to minimize vibration
- Alternative to an engine mounted compressor



### Suggested Applications



### Recommended Bergstrom Electrified System



**TDR5**



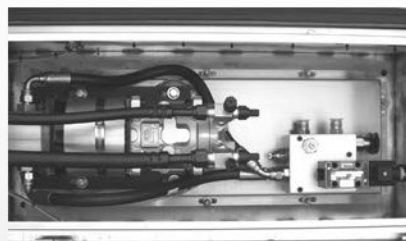
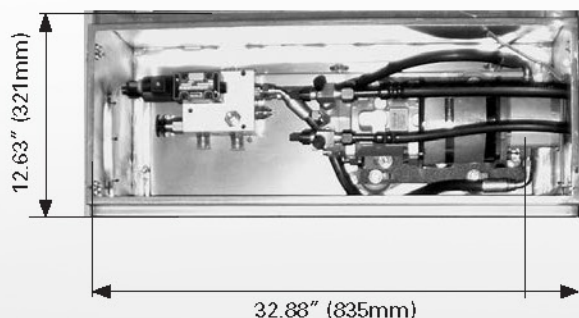
**TPR6**

### Technical Specifications

Model	TBV6 12V	TBV6 24V
Voltage	12V	24V
Dimensions (L x W x H)	32.88in x 12.63in x 13.38in (835mm x 321mm x 340mm)	32.88in x 12.63in x 13.38in (835mm x 321mm x 340mm)
Weight	100 lb (45,4 kg)	100 lb (45,4 kg)
Mounting Position	Rooftop or Deck	Rooftop or Deck

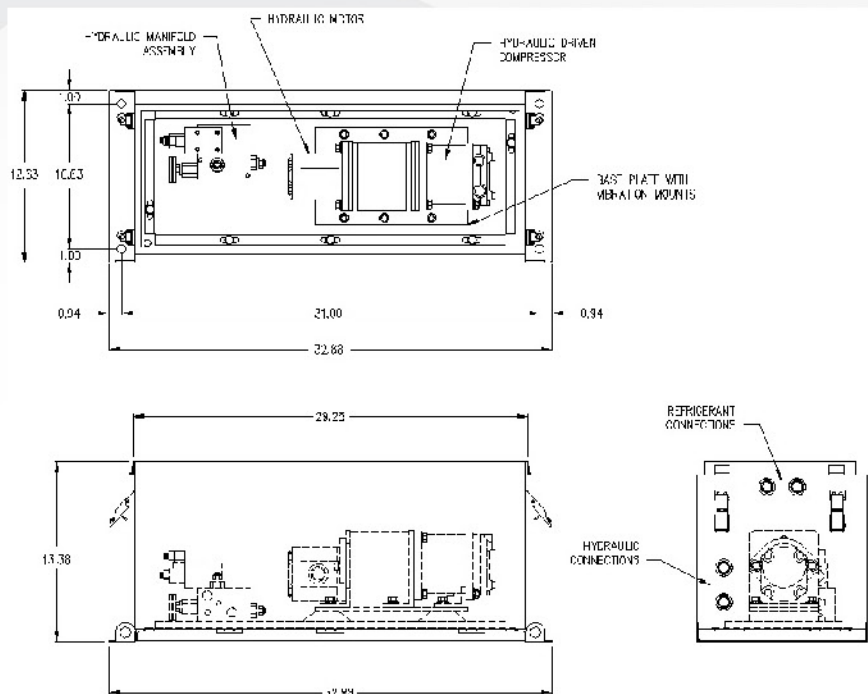
Unless otherwise stated, performance measurements are conducted in accordance with SAE J638 for heaters and IMACA 200 for evaporators.

## Dimensions layout



Bergstrom Electrified

## Line Drawing



When placing an order please contact your sales representative to review your order to ensure the proper system has been identified for your vehicle application.

Availability of the products shown in this catalog is subject to change without notice by Bergstrom, Inc. For the most current product information please visit the Bergstrom Distributor website at <https://parts.shop.bergstrominc.com/>.